

MILLENNIUM GRANDSTAND

EXHIBITION HALL 4

A beautifully furnished lounge bar connected to Exhibition Hall 3 via the lift lobby with beautiful views of the racecourse and courtyard. Exhibition Hall 4 is ideal for exhibition stands, receptions or as a refreshment area for meetings.



THEATRE

40



BOARDROOM

-



CABARET

24



CLASSROOM

-



DINNER

-



DINNER DANCE

-



U SHAPE

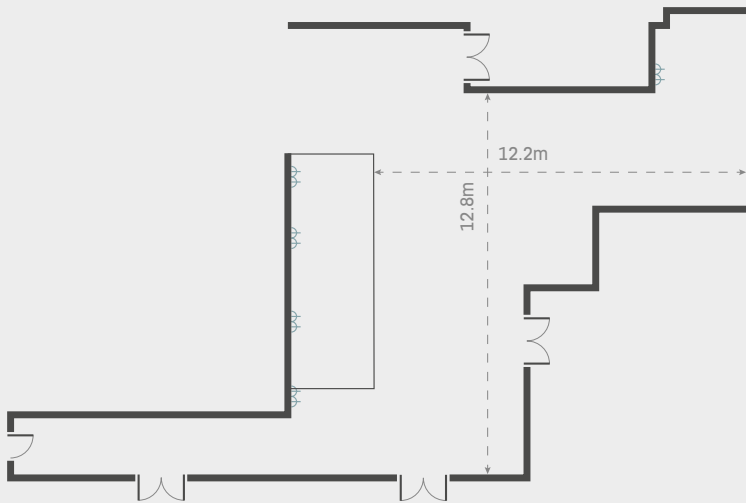
-



RECEPTION

100

FLOOR PLAN



13A SOCKET

-- USEABLE SPACE DIMENSIONS

1 X 32AMP SINGLE PHASE

CEILING HEIGHT 3.2M



CONTACT US ON: 01638 675300 | NEWMARKET.CONFERENCES@THEJOCKEYCLUB.CO.UK